

Construction en bois Skypark Business Center

Giovanni Bordi | Architecte, Metaform Architects, Luxembourg

skypark

Site **Findel Airport, Luxembourg**

Durée construction **2019-2025**

Surface **160.000 m²**

Maître d'ouvrage **LuxAirport**

BIG x Metaform



BIG

Conception

Détails d'exécution

APS, APD, EXE

metaform
architects

Conception

APS, APD, EXE

Détails d'exécution

Autorisation de bâtir

Soumissions

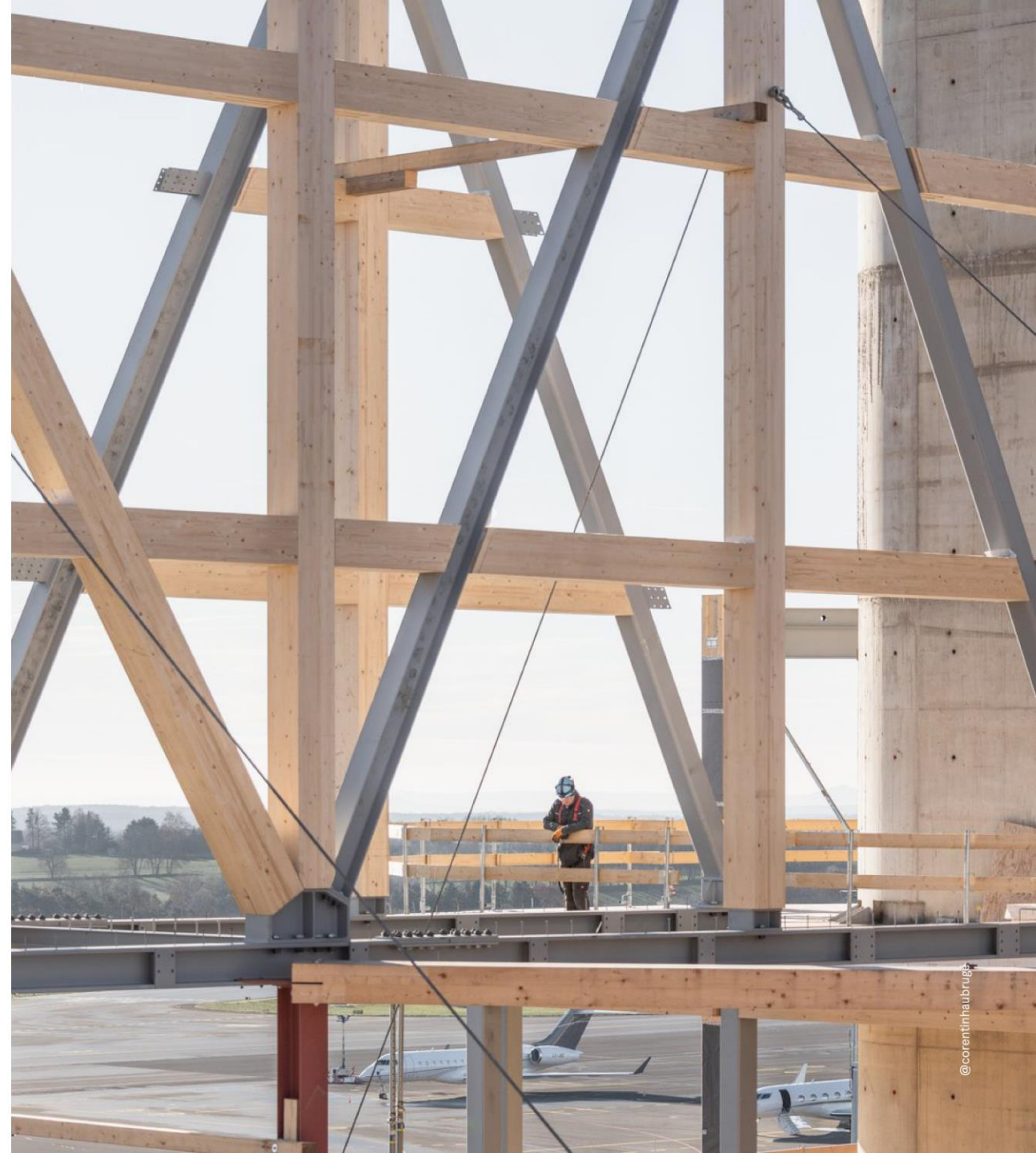
Direction des Travaux

superstructure

un des plus grands projets en bois en Europe

85%
bois

15%
acier



projet pilot



11 architecture projects set to shape the world in 2025

Skypark Business Center, Luxembourg

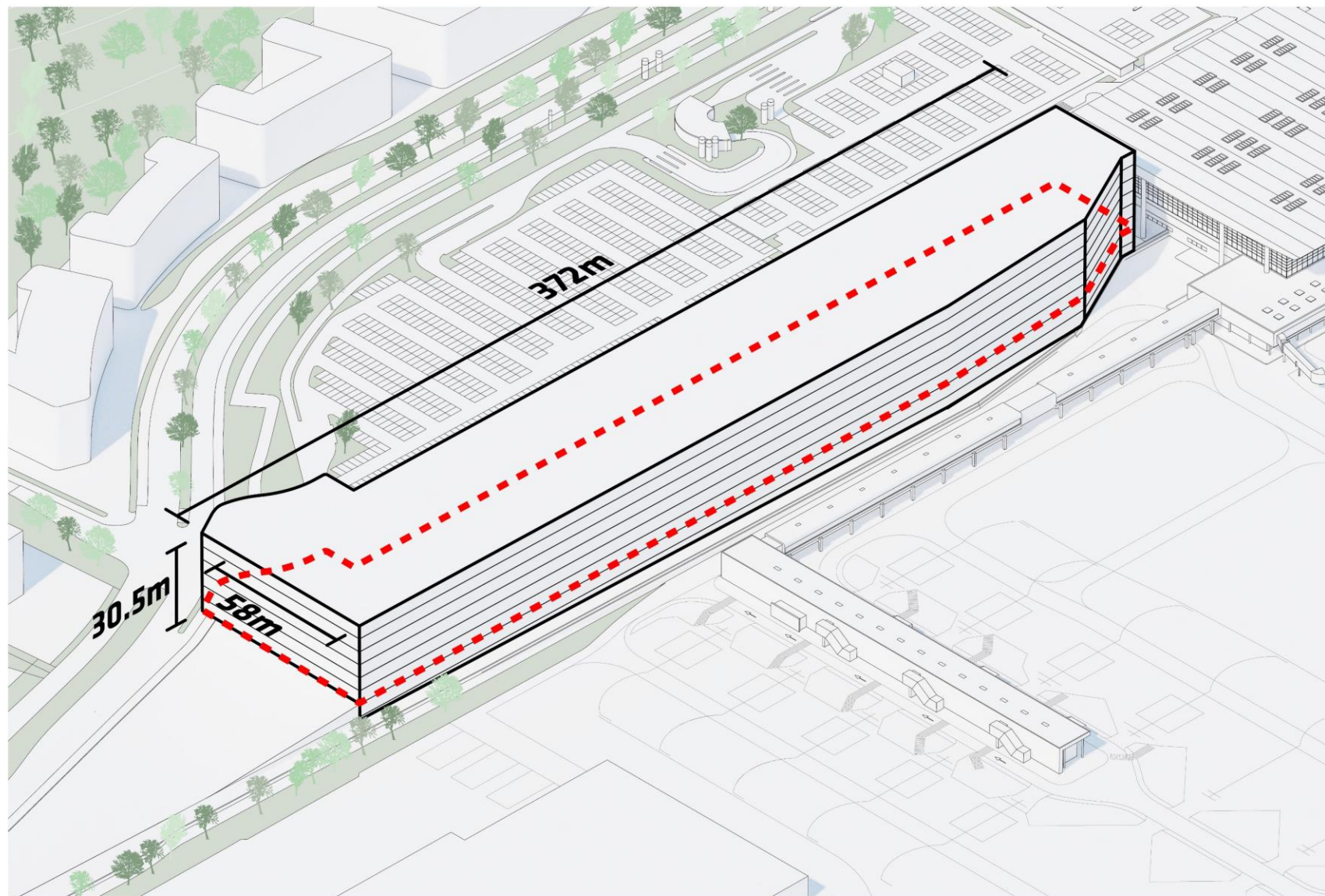


Skypark Business Center will open on a site adjacent to Luxembourg Airport. BIG

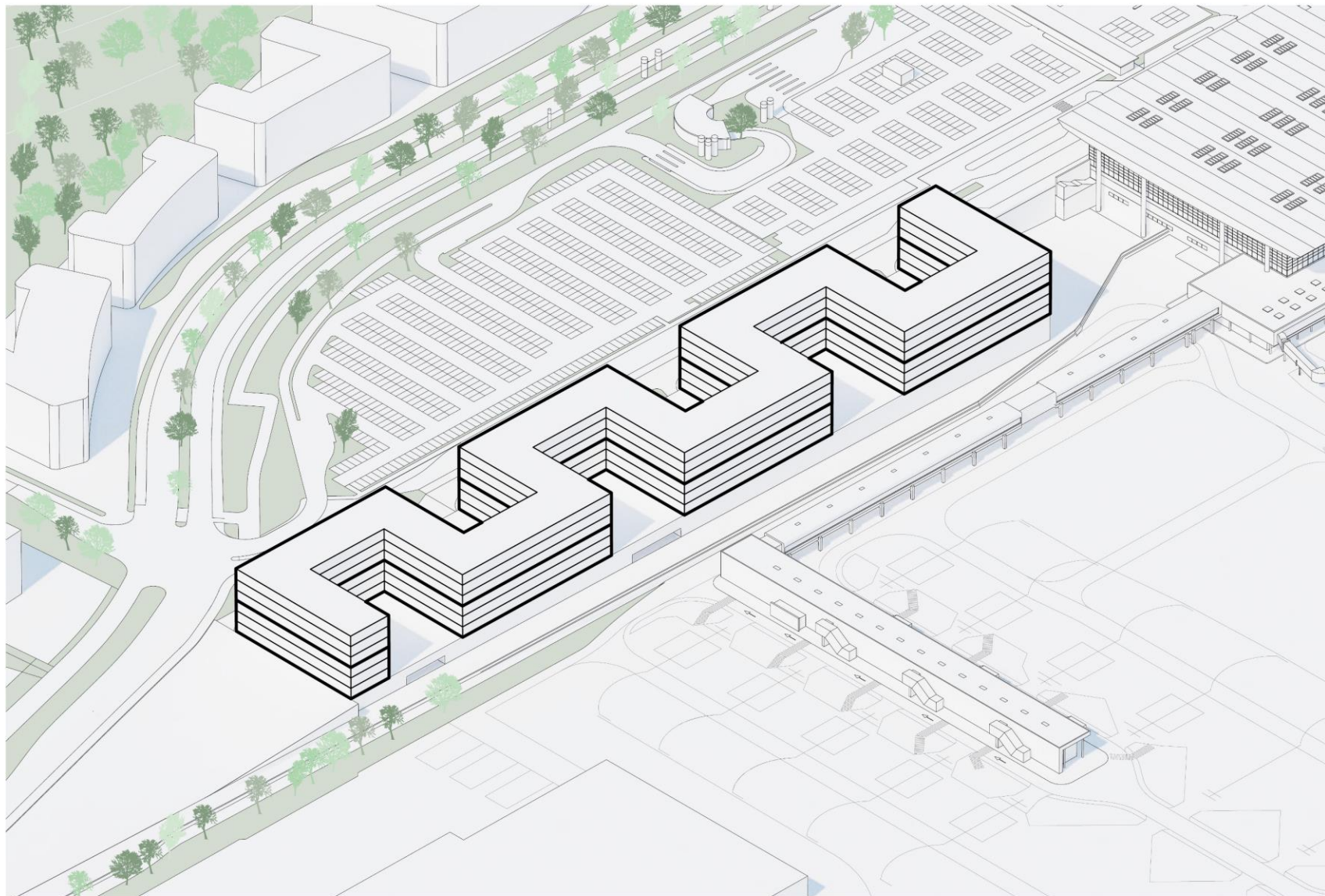


site

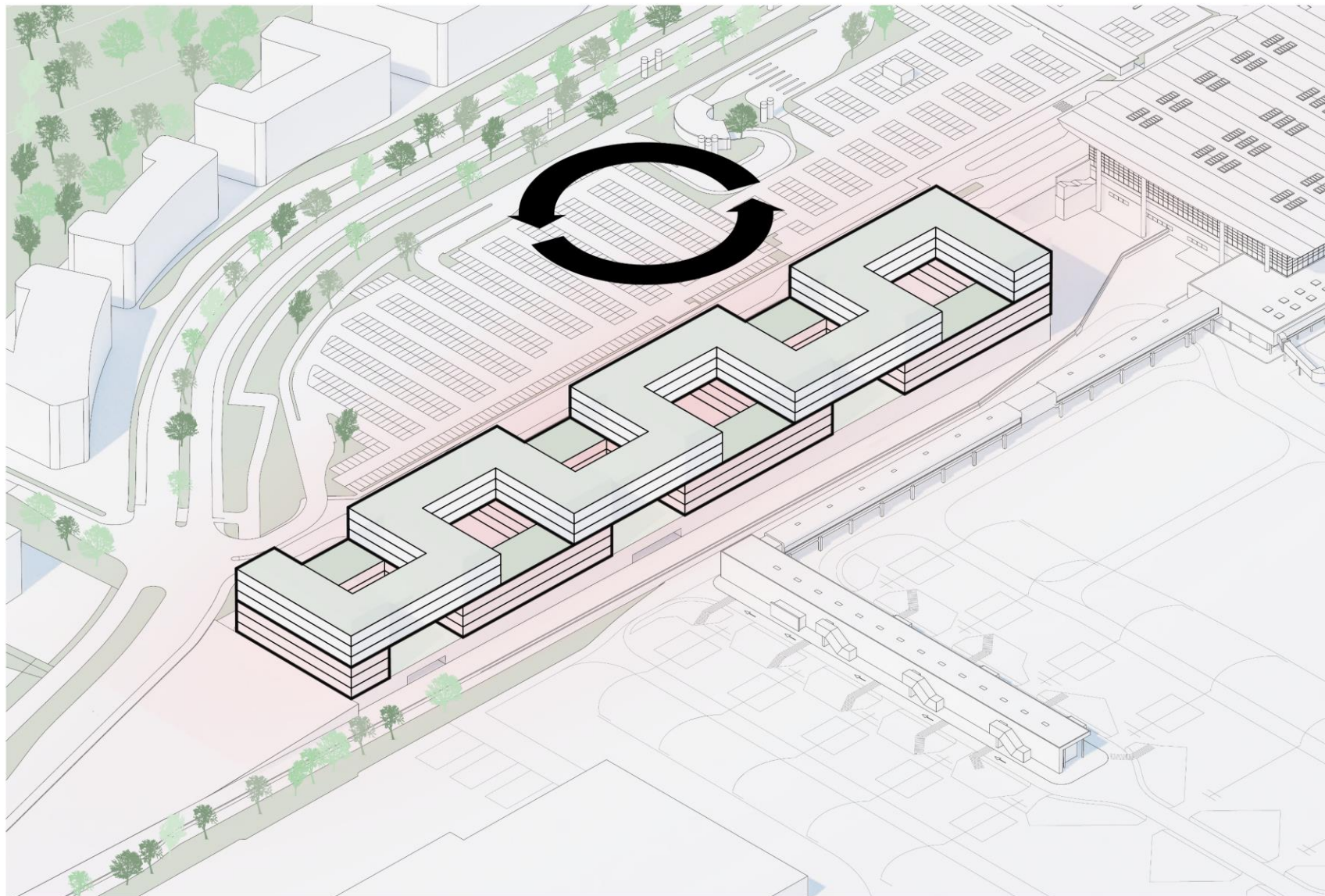
longueur 380 m
largeur 50 m
hauteur 30 m



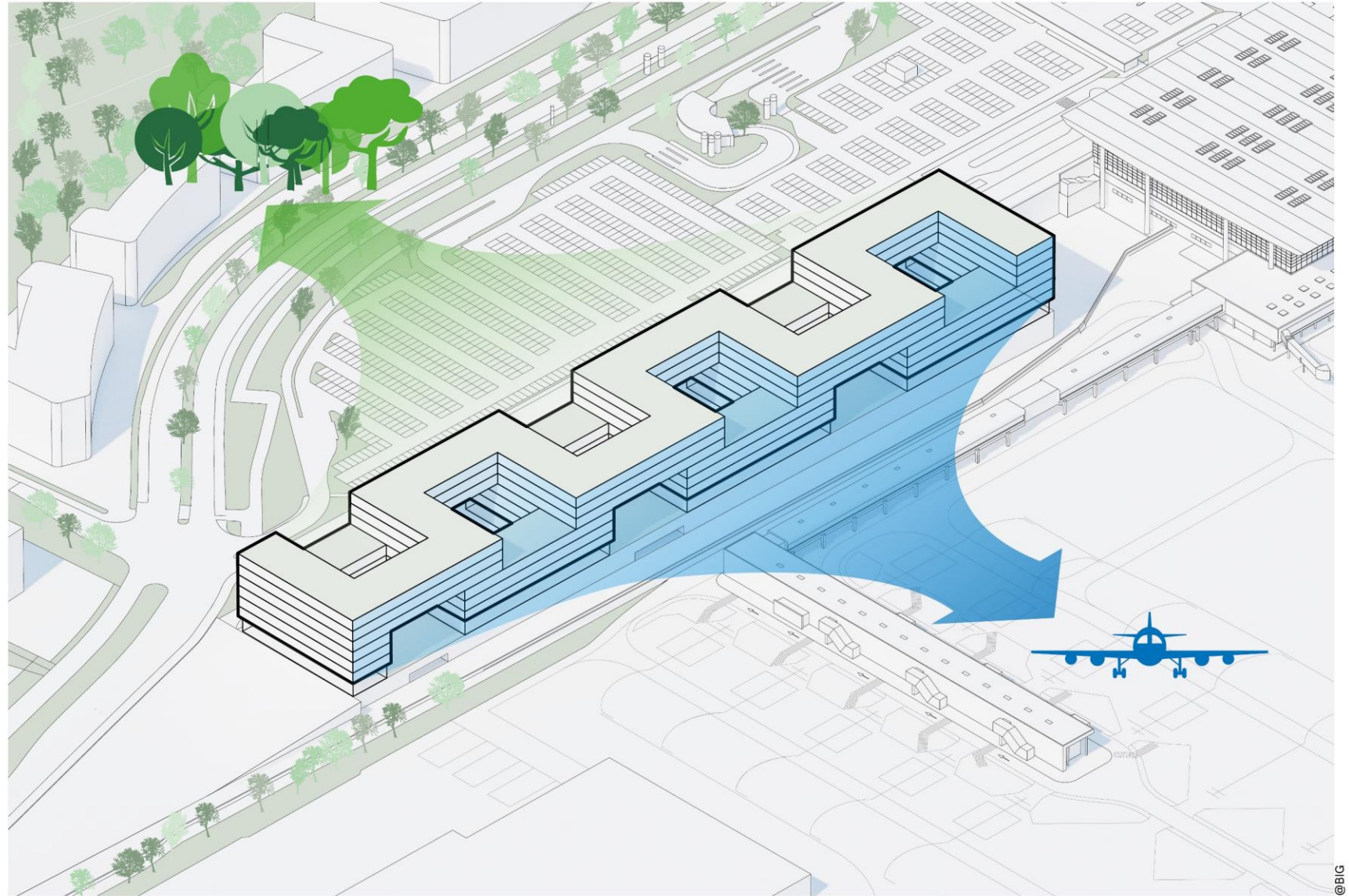
serpent



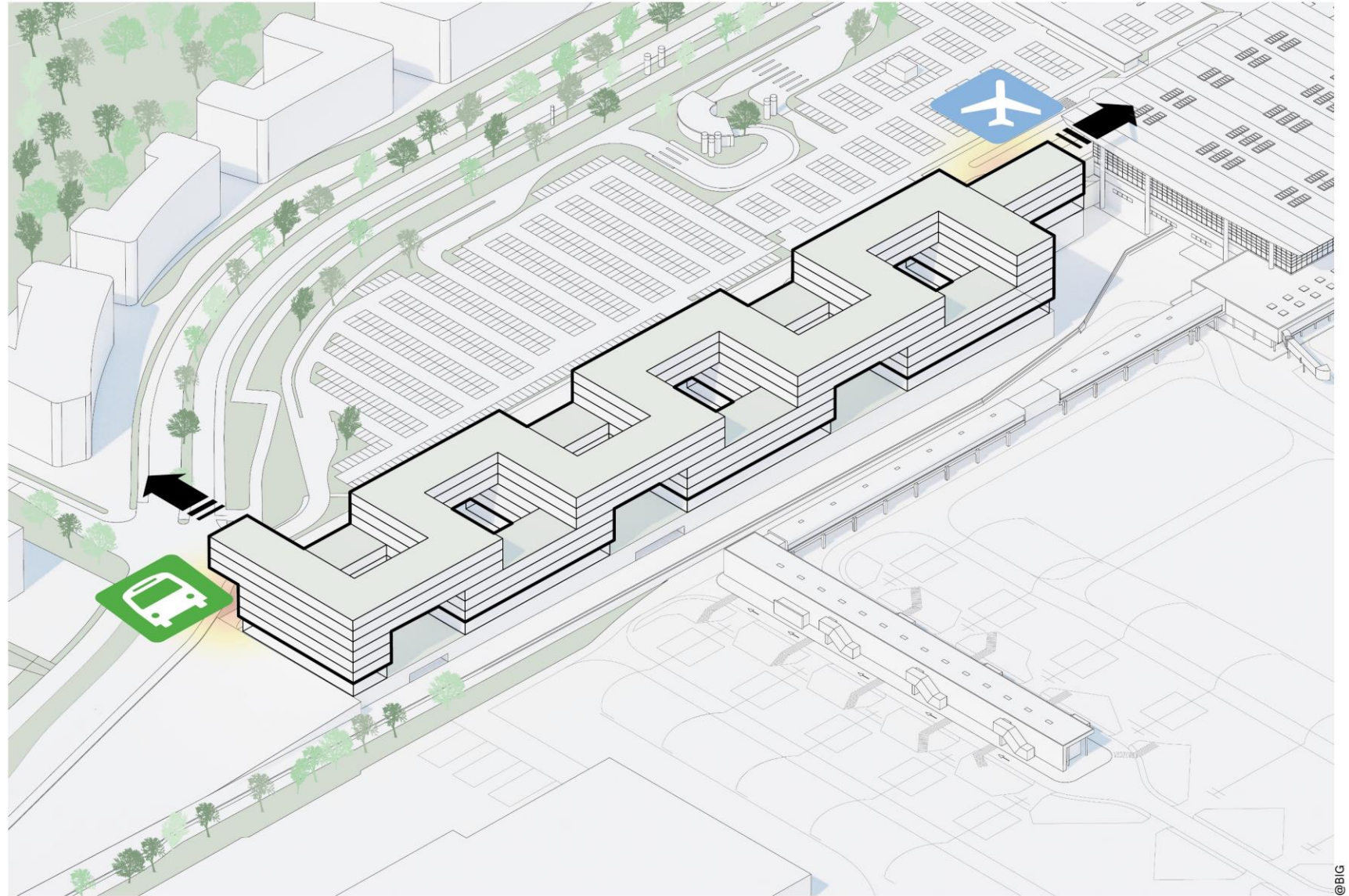
weaving



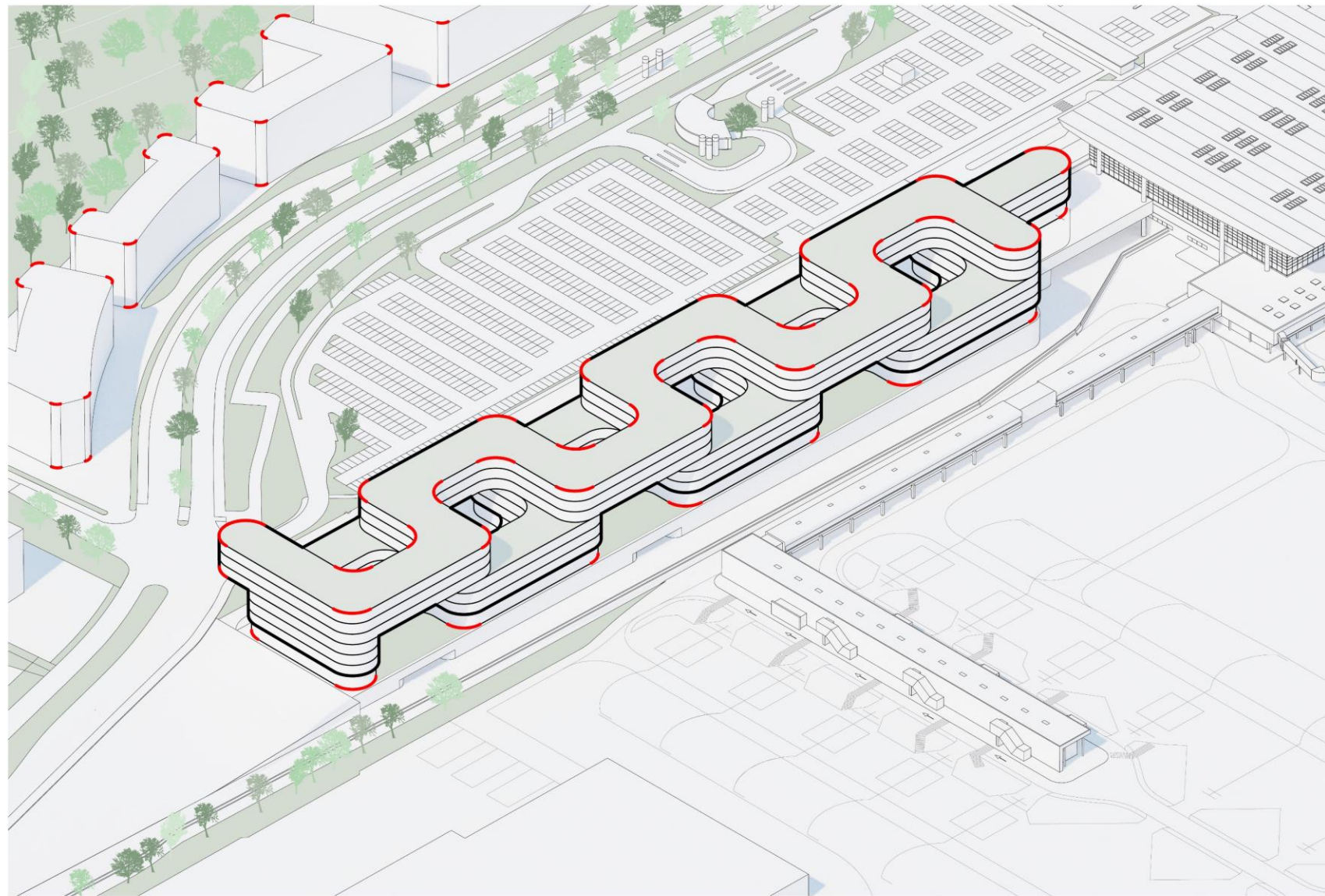
vues



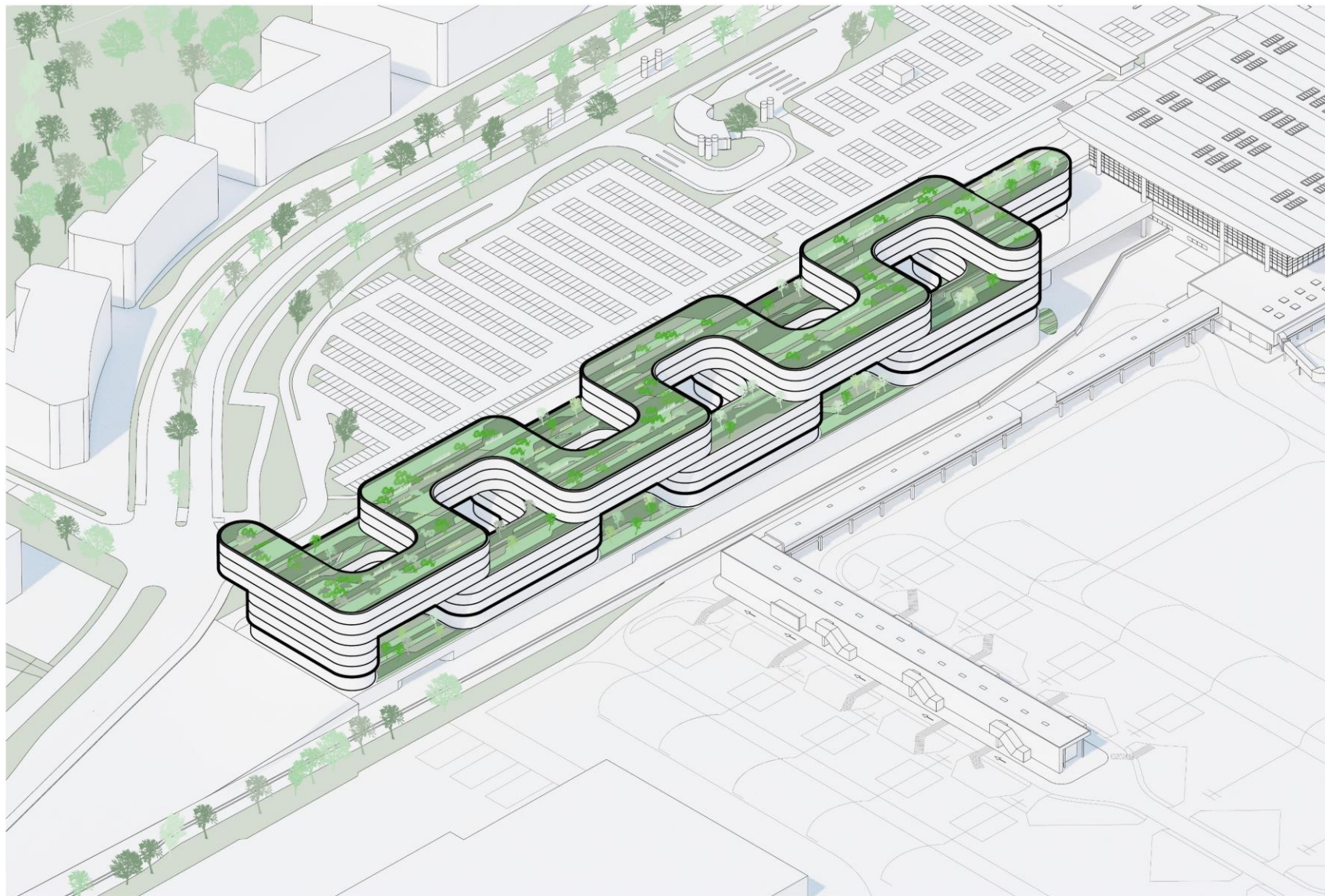
landmark



coins panoramiques

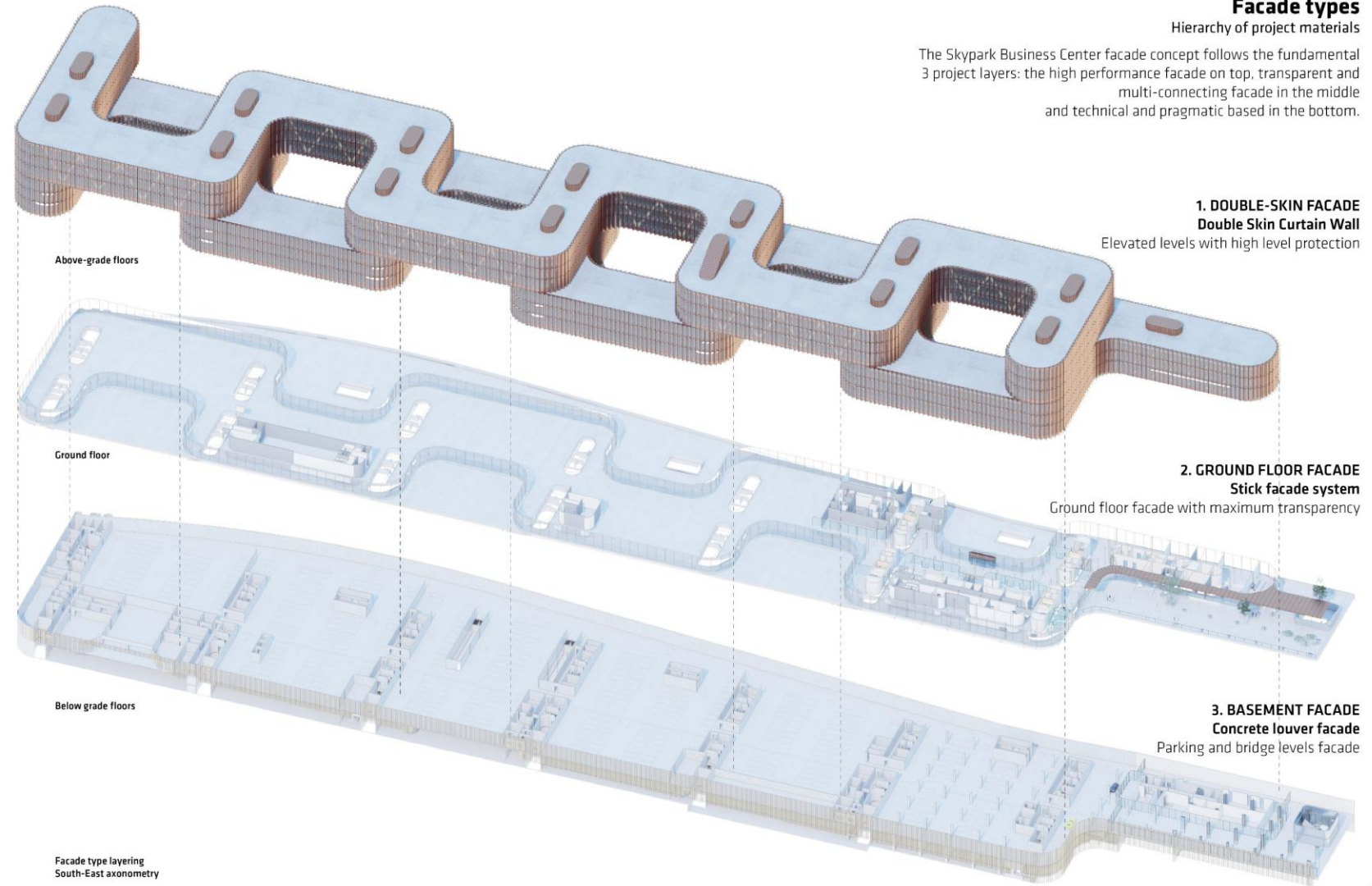


terrasses végétalisées





3 parties



structure hybride



structure bois

glulam

poteaux & poutres

CLT

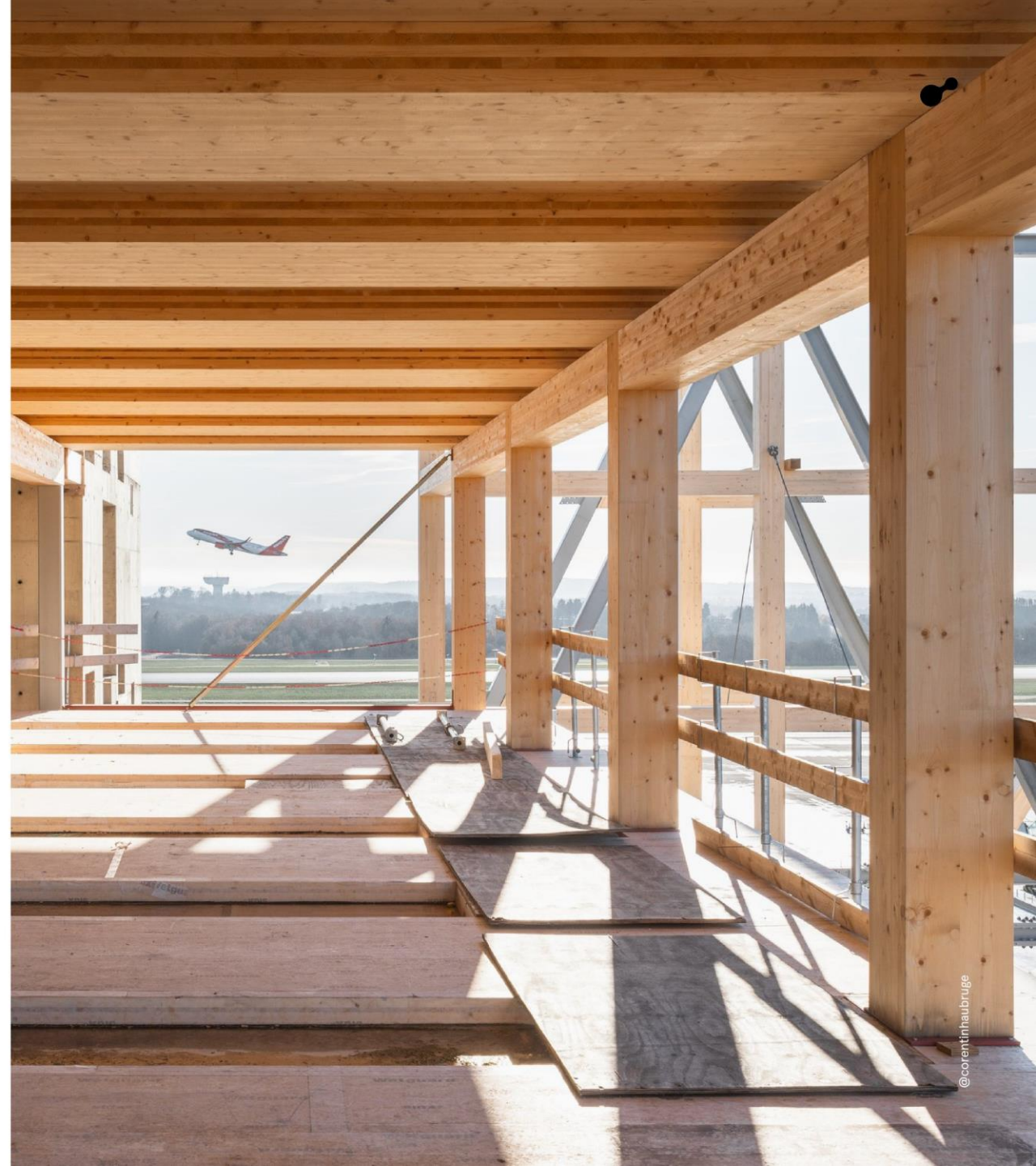
dalles

préfabriqués

éléments

sapin

origine européenne

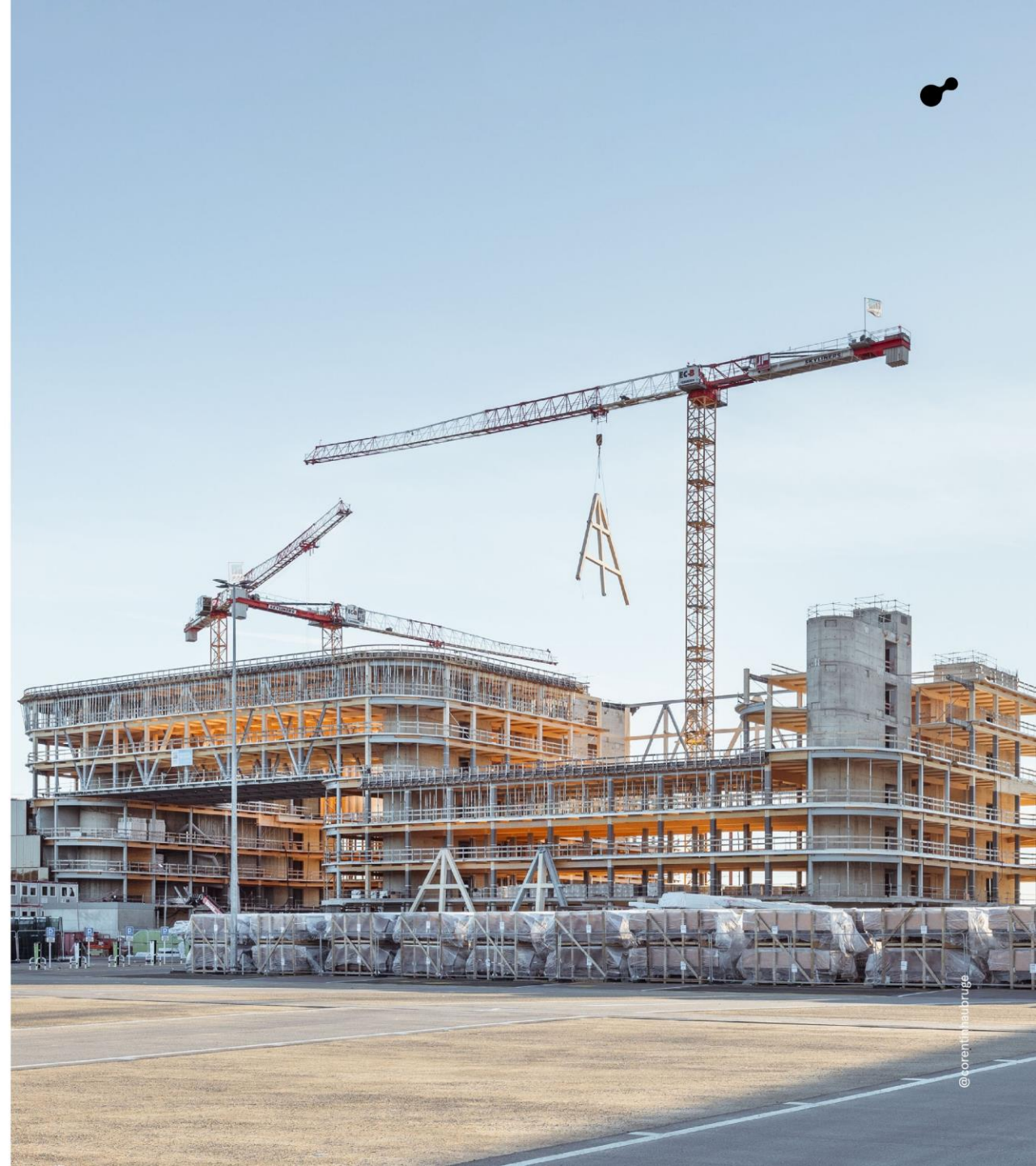


construction efficace

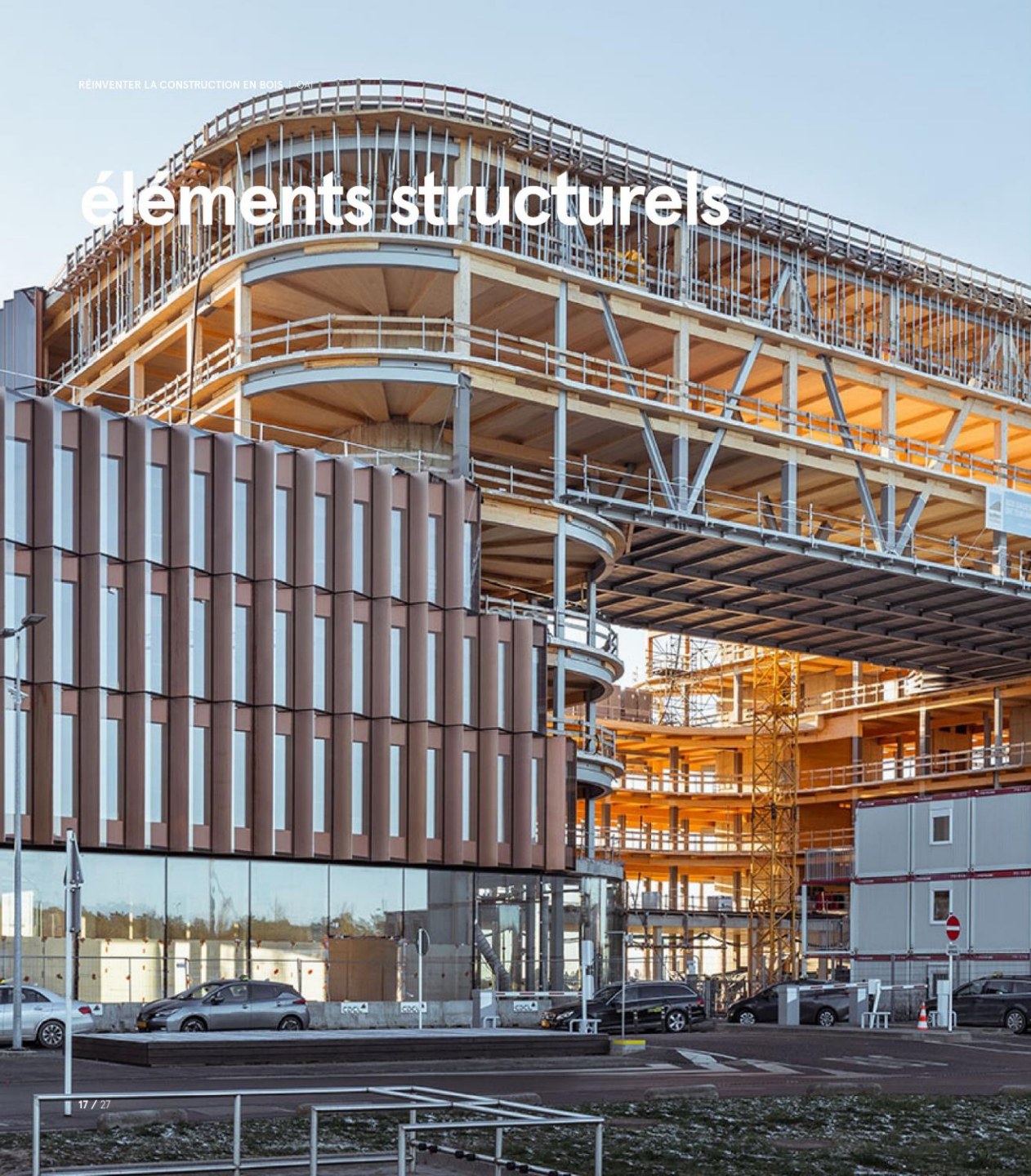
15 000 m³
du bois utilisé

70 000 m²
surface totale

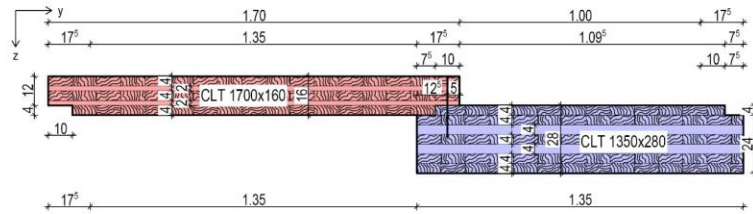
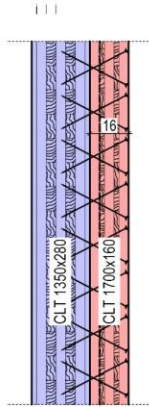
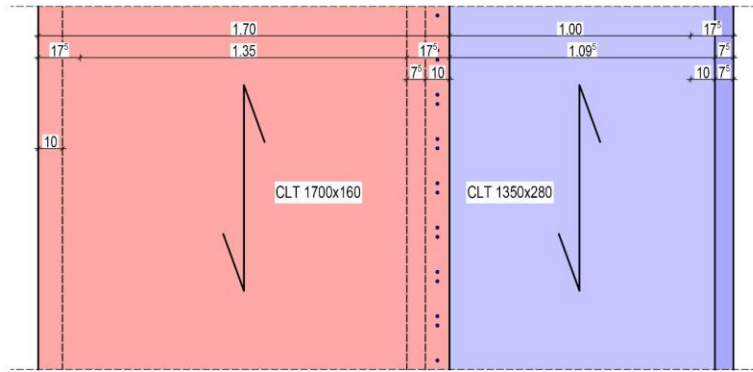
27 mois
avril 2022-jullet 2024



éléments structurels



dalles CLT



dalles CLT



@BIG





protection au feu

étude & développement de la protection incendie

protection des éléments métalliques

définition & tests des matériaux utilisés

étude du traitement des nœuds structurels

étude des connexions

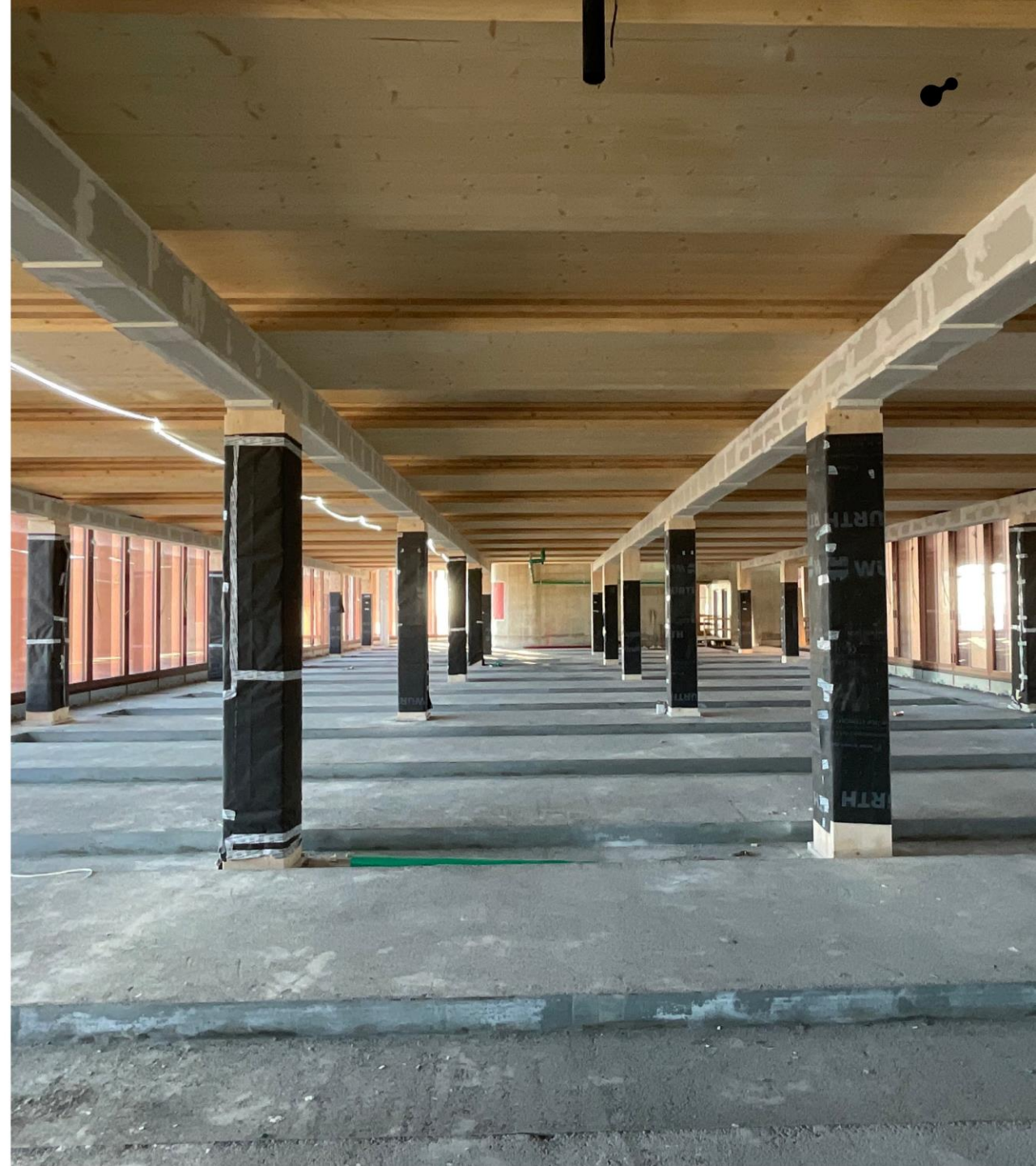
protection au feu

connexion CLT & facade



protection au feu

connexion poteaux / poutres



protection au feu

poutres rondes



protection au feu

connexion poutres / diagonale



protection au feu

connection CLT / noyau béton

